



Dominion[®]

Welcome

Matt Parker

Manager Electric Transmission Operations Planning

Dominion at a Glance...



Headquarters
**RICHMOND,
VIRGINIA**



FORTUNE 500
Rank
#212



Operating
Revenues
\$16.29 BILLION



Total # of
Employees
15,560



Assets
**\$50.1
BILLION**



Market
Capitalization
**\$38.2
BILLION**



Dividends Per
Share
\$2.40



Common Shares
Outstanding
**583
MILLION**










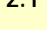
Common Stock
Price Range
\$55.03 - \$73.11

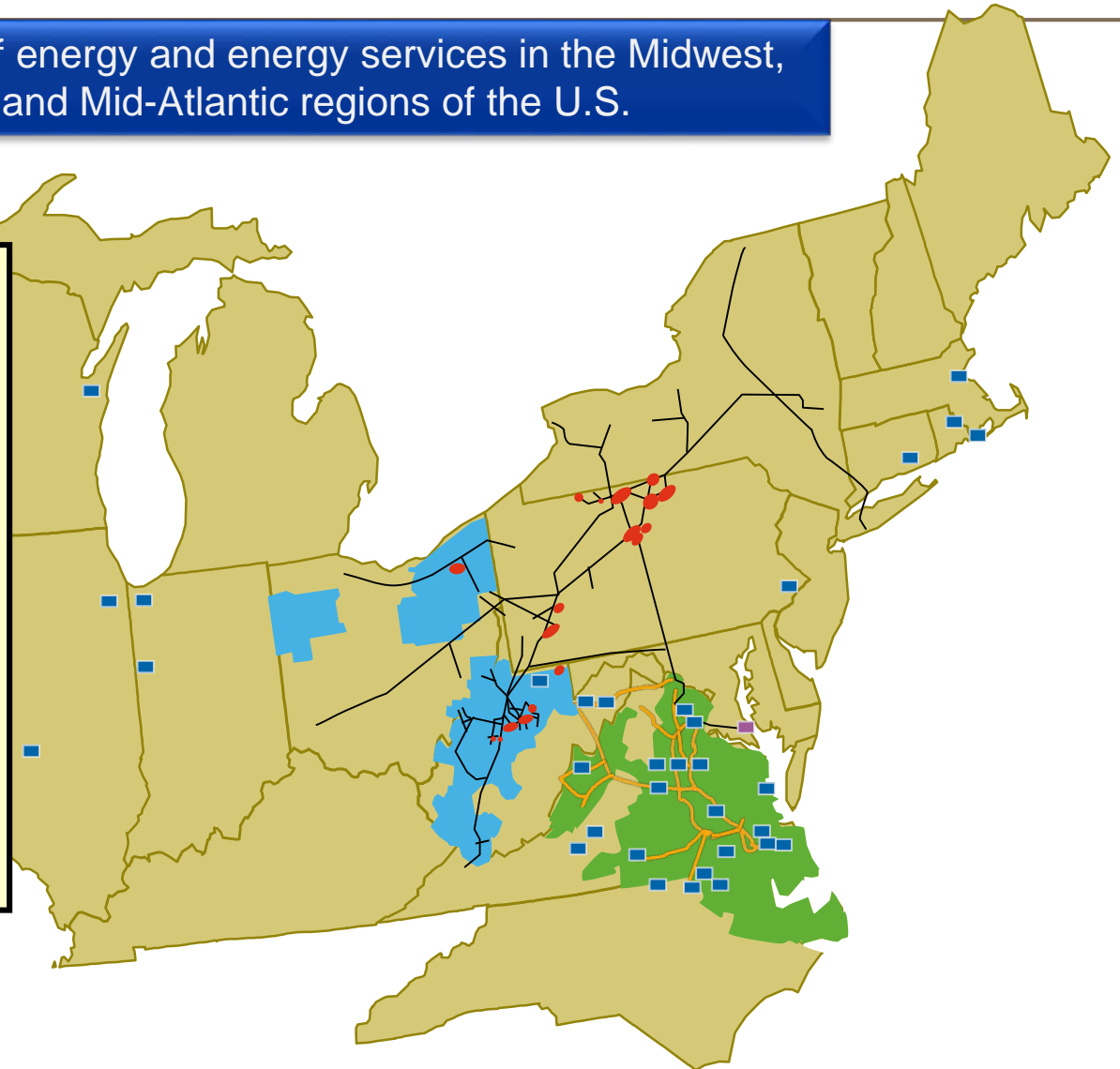


Total Charitable
Giving
**+\$20 MILLION
PER YEAR**

Dominion Profile

Leading provider of energy and energy services in the Midwest, Northeast and Mid-Atlantic regions of the U.S.

-  ~27,600 MW of electric generation
-  6,300+ miles of electric transmission
-  12,000 miles of natural gas transmission, gathering and storage pipeline
-  942 billion cubic feet of natural gas storage operated
-  Cove Point LNG Facility
-  2.4 million electric customers in VA and NC
-  1.3 million natural gas customers in OH & WV
-  2.1 million non-regulated retail customers in 13 states



Our Integrated Business Model

Dominion Virginia Power

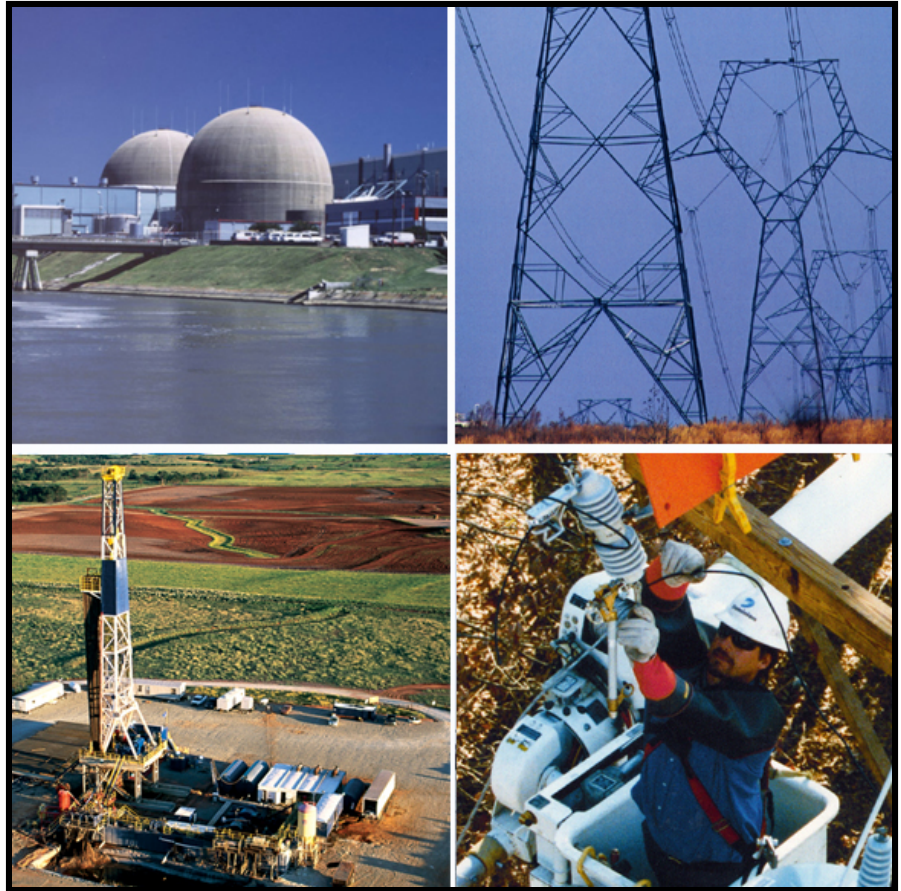
- Electric Distribution
- Electric Transmission
- Unregulated Retail

Dominion Generation

- Regulated Generation
- Merchant Generation

Dominion Energy

- Gas Transmission
- Gas Distribution
- Producer Services



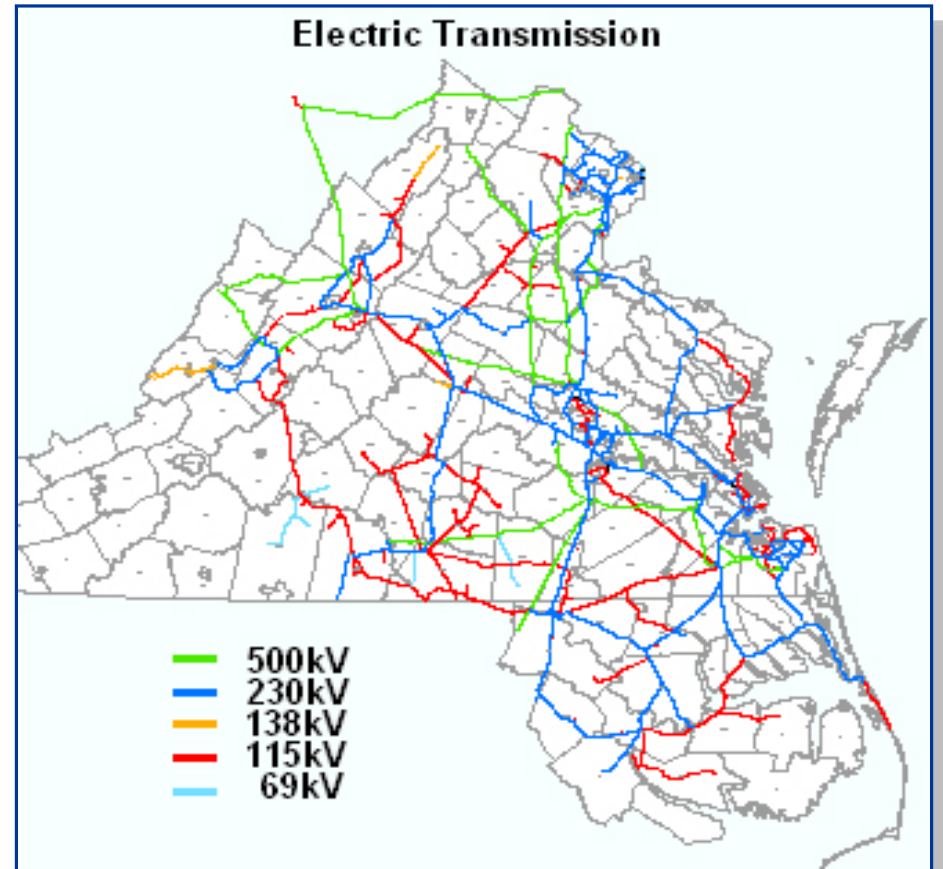
Electric Transmission & Substation Expansion Plan

\$1.6B assets in service
doubling
Over 3 year timeframe

- 6,400 miles of transmission lines
- 465+ substations

Keys to Success:

- Safety
- Reliability
- Compliance
- Project Execution



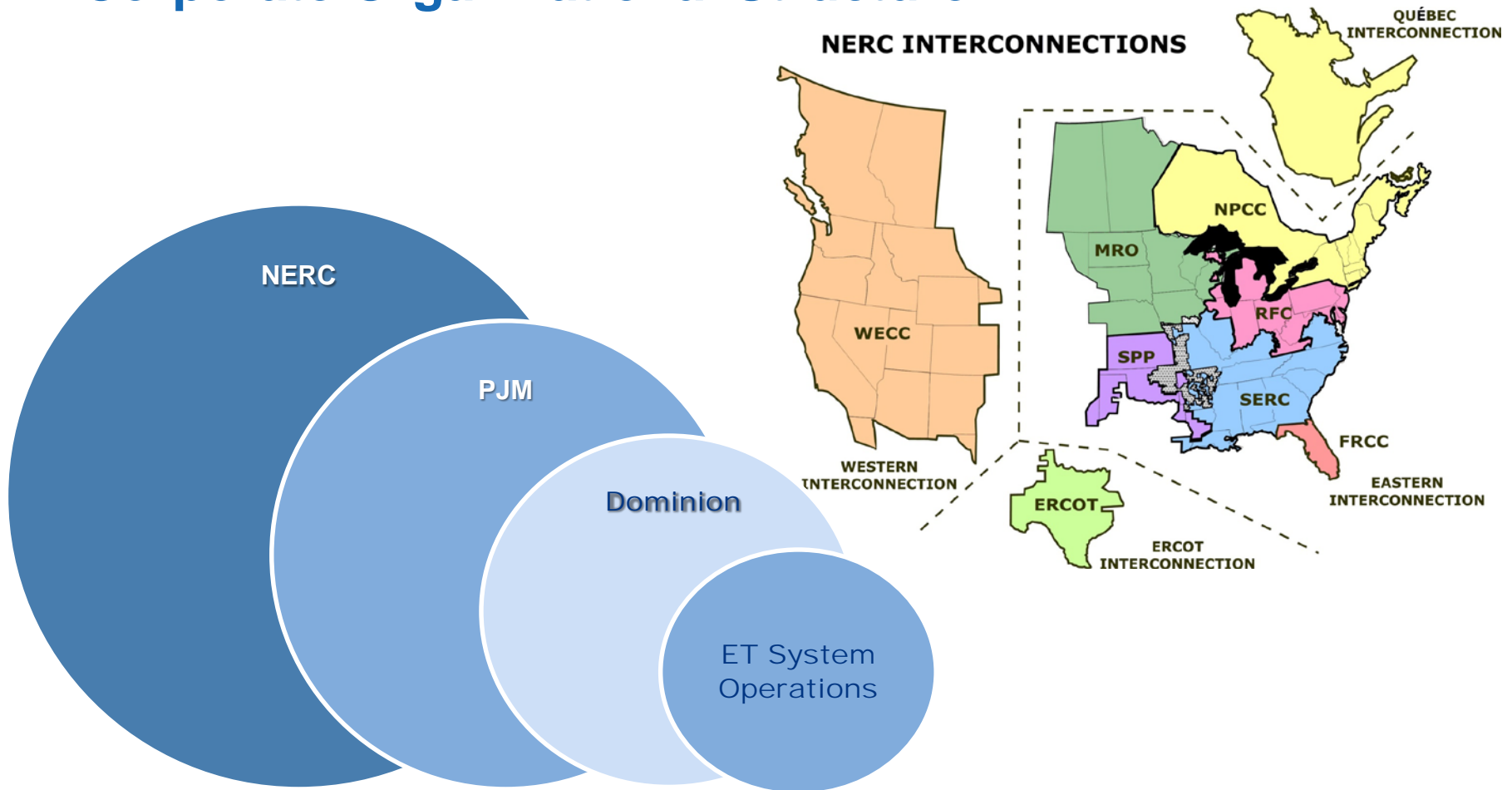
New Challenges; More Opportunities

- Demand for reliability and the need for situational awareness
- Generation retirements
- New generation remote from load centers
- Increased stability concerns
- Increased voltage swings
- Distributed Generation
- Alternative energy sources



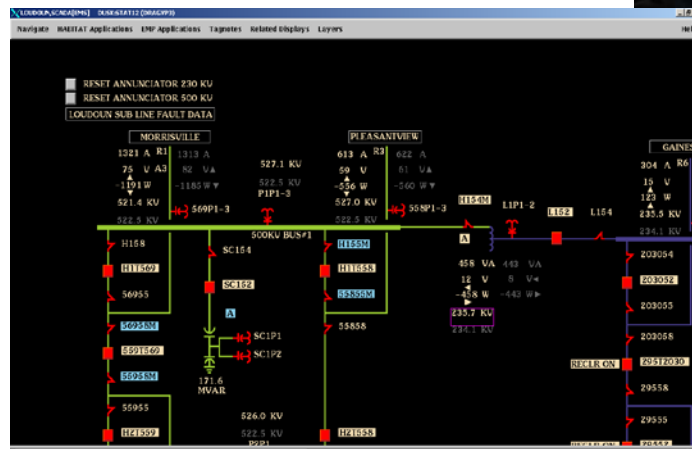
System Operations Center

- Corporate Organizational Structure:



System Operations Center

- Split into 4 different teams (plus 1)
 - Real Time Operations
 - Operations Planning
 - Operations Engineering
 - Operations Support
 - **IT Support Services



System Operations Center

- Real Time Operations
 - Monitor system conditions
 - Alarms
 - Voltages
 - Contingencies
 - Communications
 - Internal
 - Interconnects
 - Reliability Coordinator (PJM)
 - Emergency Response
 - Switching Activities



System Operations Center

- Operations Planning

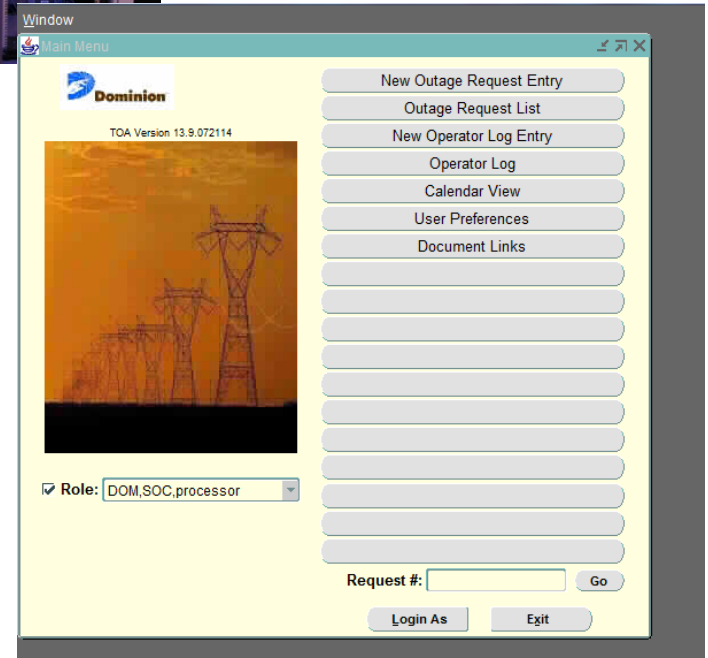
- Monitor system conditions
 - Contingencies
- Communications
 - Internal
 - Interconnects
 - Reliability Coordinator (PJM)
- Contingency Mitigation
- Outage Planning

The screenshot displays a software interface for monitoring contingency violations. The main window title is 'CTG_VIOLATION_BRANCH_RTCA[EHS] DAWN01SPC5 (DRAGVP2) Page:1'. The interface includes navigation tabs for 'HABITAT Applications', 'EMP Applications', 'Related Displays', and 'Analyst Displays'. The main content area is titled 'Contingency Violations' and shows a table of violations. The table has columns for 'Alarm New Warn', 'Branch Descriptions', 'Pre CTG Type Value', 'Post CTG Value', 'LINE:AMP Rating Dev', and 'XF: MVA % Rtg Base'. The table lists several violations, including those for '572 LINE: MTSTORM-MEADOWBR' and '553 LINE: ELMONT-CUNNINGHAM'. Each entry has a 'Data Cont...' button next to it.

Alarm New Warn	Branch Descriptions	Pre CTG Type Value	Post CTG Value	LINE:AMP Rating Dev	XF: MVA % Rtg Base
	Contingency ID: L572 Descri: 572 LINE: MTSTORM-MEADOWBR CLASS: 500				
	NSHENDOH :NSHENDOHZ @01NSHEND	BR -488	-726	642 84 113.2 LD SH	EMER
				642 84 113.2	
				622 104 116.0	NORM
	128 :128B @ENDCAVRN	BR 510	836	786 50 106.4 LD SH	EMER
				762 74 109.7	
				762 74 109.7	NORM
	ENDCAVRN TRANSF TX3	BR -211	-288	282 6 102.2 EMER	
				268 20 107.5	NORM
	Y 2017 :2017A @HRSNBGDP	BR -598	-805	816 -11 98.6 NORM	
	Contingency ID: L553 Descri: 553 LINE: ELMONT-CUNNINGHAM CLASS: 500				
	NSHENDOH :NSHENDOHZ @01NSHEND	BR -488	-663	642 21 103.3 LD SH	EMER
				642 21 103.3	

System Operations Center

- **Operations Engineering**
 - Operator Tools
 - Build
 - Maintenance
 - Upgrades
 - EMS Model Builds
 - Manage Facility Ratings
 - Research and Design
 - New Tools
 - New Products
 - Simulator Engine



System Operations Center

- **Operations Support**

- Operator Training
- Operator Certification
- Compliance
- Procedures
- Documentation
- Drills
- Black Start

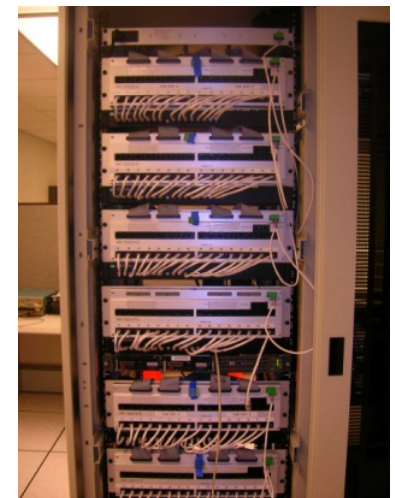


System Operations Center

- ****IT Support Services**
 - Program and Maintenance
 - EMS
 - DMS
 - Tools
 - Alarms
 - Monitors
 - Communications Links
 - Hardware / Software Support
 - Critical Infrastructure Oversight

ALSTOM

DMS





Dominion[®]

Questions?